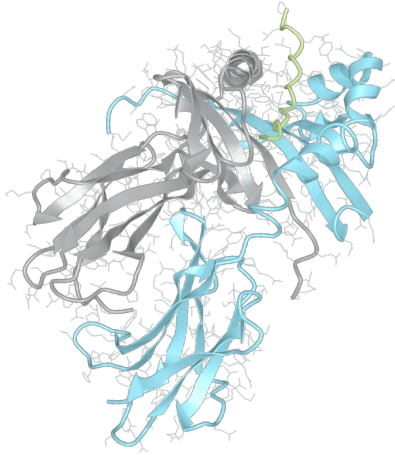


Product datasheet



sHLA- DRB1*10:01bio DRA*01:01bio

DRB1*1001, DRB11001, DRB1*10, DRB10, DR10
DRA*0101, DRA0101, DRA*01, DRA01

Serological Name	DR10
Peptide Load	Endogenous
Modification	Unmodified
Conjugation	Biotin
SKU	DRB11001bio

Product Description

Allele Name	<p>DRA*01:01</p> <p>DRB1*10:01</p>
HLA Class	HLA Class II
HLA Gene Locus	HLA-DR
Alternative Allele Name A Chain	DRA*0101, DRA0101, DRA*01, DRA01
Alternative Allele Name B Chain	DRB1*1001, DRB11001, DRB1*10, DRB10, DR10
Description	Recombinant, truncated Class II soluble Human Leukocyte Antigen (sHLA), naturally folded and glycosylated, loaded with endogenous peptides.
Serological Name	DR10
Serological Split	-
Allele Frequency [World Population]	
A chain	-
B chain	2.2%

Associated products

[DRB11001](#)
[DRB11001pe](#)

Product Specification

Product name	HLA-DRB1*10:01bio
HLA Species	Human
Host Cell Line Species	Mouse
Clone Designation	B2G2
Tail Specification	ZP
Peptide Load	Endogenous
Modification	Unmodified
Conjugation	Biotin
Complexity	Monomer
Protein Format	Recombinant, truncated, zipper-stabilized, soluble, non-modified, biotinylated, endogenously loaded
Storage Temperature	4°C (This product should be stored undiluted)
Form	Liquid
Concentration	300.0 µg/µl
Formulation	PBS/0.02% Sodium Azide
pH	7.4
Purification Method	Affinity Chromatography
Grade	Research Use Only [RUO]
Authentication Verification	Sequence Based Typing

Protein Sequences

Alpha Chain Sequence	<p>IKEEHVIIQA EFYLNPDQSG EFMDFDGDGE IFHVDMAPKE TVWRLEEFGR FASFQAQAL ANIAVDKANL EIMTKRSNYT PITNVPPEVT VLTNSPVELR EPNVLICFID KFTPPVVNVT WLRNGKPVTT GVSETVFLPR EDHLFRKFHY LPFLPSTEDV YDCRVEHWGL DEPLLKHWEF DAPSPLPETT EVDGGGGGAQ LEKELQALEK ENAQLEWELQ ALEKELAQ</p>
Beta Chain Sequence	<p>GDTRPRFLEE VKFECHFFNG TERVLLERR VHNQEEYARY DSDVGEYRAV TELGRPDAEY WNSQKDLLER RRAAVDTYCR HNYGVGESFT VQRRVQPKVT VYPSKTQPLQ HHNLLVCSVN GFYPGSIEVR WFRNGQEEKT GVVSTGLIQN GDWTFQTLVM LETVPQSQEV YTCQVEHPSV MSPLTVEWRA RSESAQSKVD GGGGAQLKK KLQALKKKNA QLKWKLQALK KKLAQ</p>

Related Products

[DRB1101bio](#)
[DRB10701bio](#)
[DRB11501bio](#)
[DRB10301bio](#)

Applications

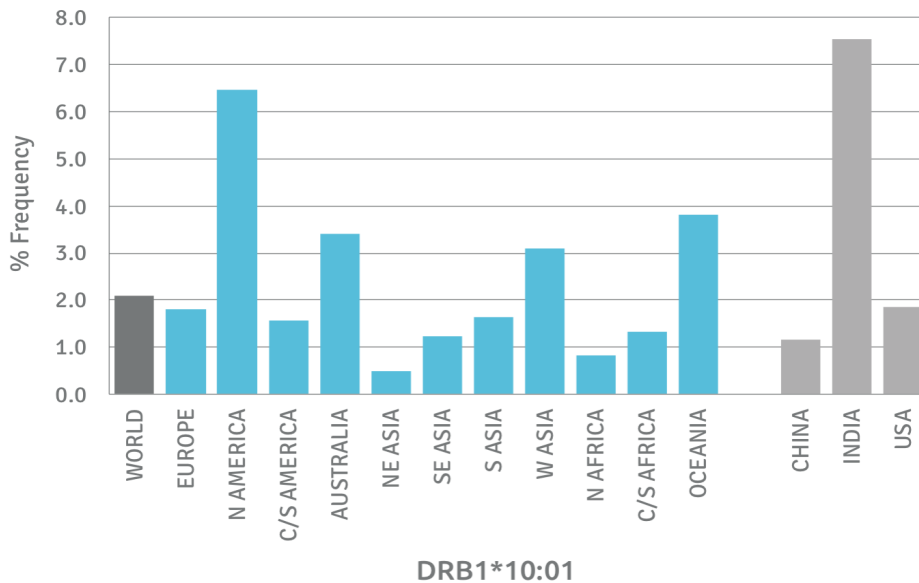
HLA Sandwich ELISAs
 HLA Direct ELISAs
 HLA-Sera Antibody Assays
 HLA Controls in ELISA Assays
 HLA Assay Standards
 HLA Blocking Assays
 HLA Neutralizing Assays
 HLA Competition Assays
 HLA Bead Assays
 HLA Immunization Procedures

Recommended Antibodies

L243

Allele Frequency

Worldwide Allele Frequency



Please note:

ALL PRODUCTS ARE FOR RESEARCH USE ONLY. NOT FOR COMMERCIAL USE IN DIAGNOSTIC PROCEDURES.
 For more information, please visit our Policies section on our website. For licensing inquiries, please contact

licensing@hlaprotein.com

 HLA Protein
PURE PROTEIN LLC

